



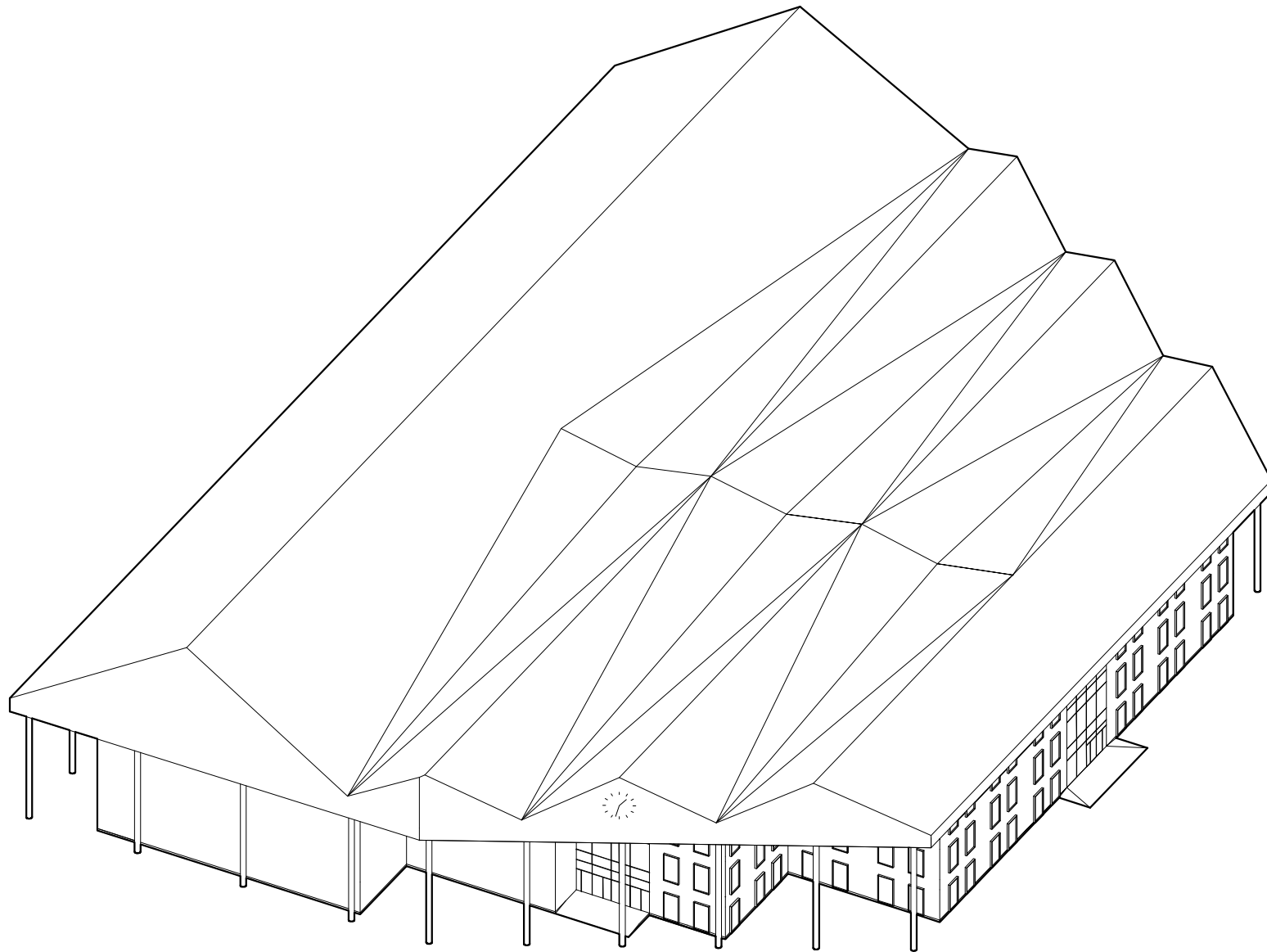
14.9.2020

Mikkelin eteläinen aluekoulu-hybridirakenne

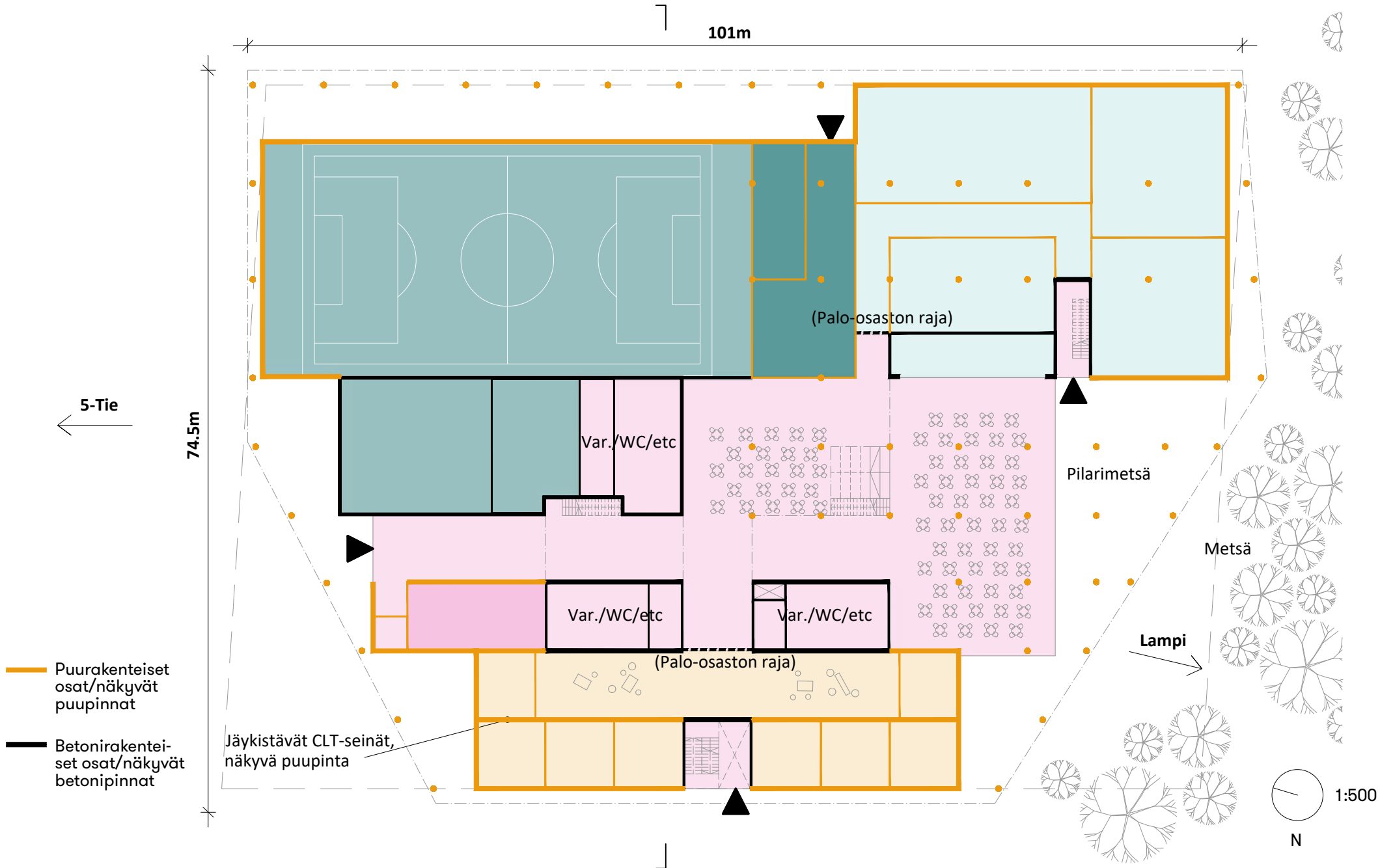
Konseptisuunnitelma



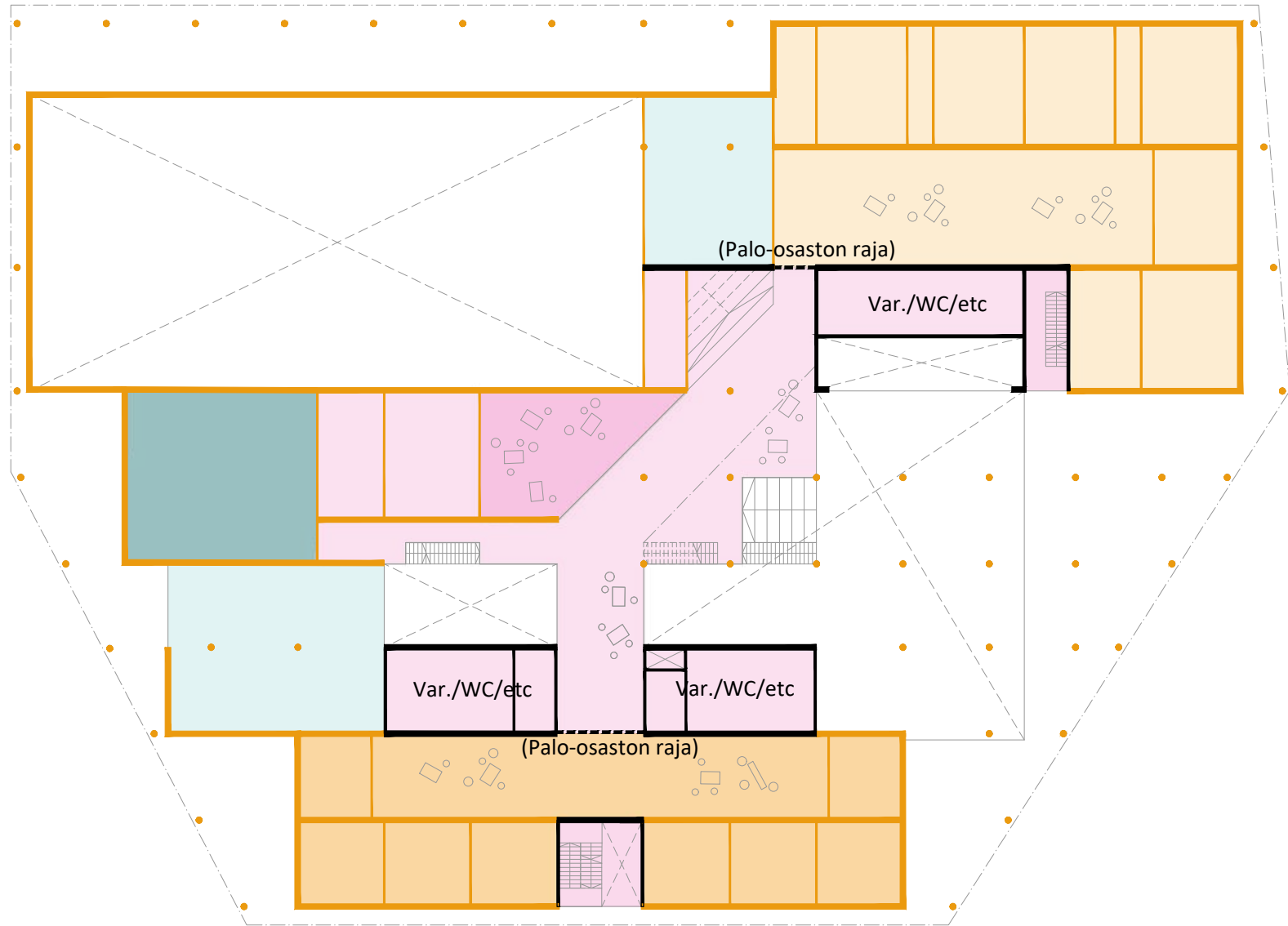
Massoittelu





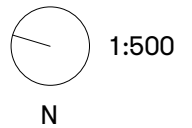
1. Kerros



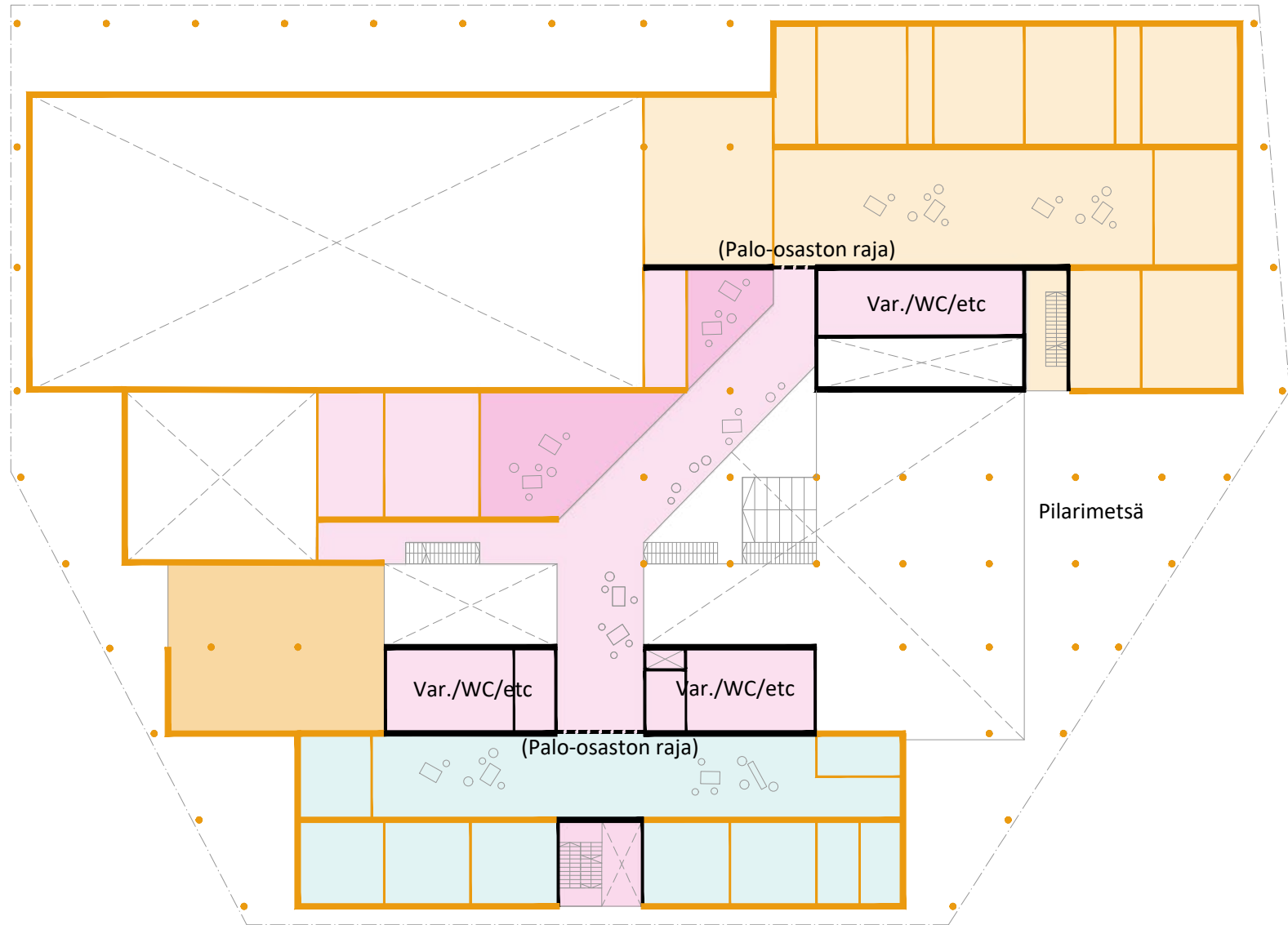
2. Kerros



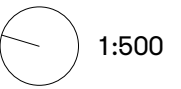
-  Puurakenteiset osat/näkyvät puupinnat
-  Betonirakenteiset osat/näkyvät betonipinnat



3. Kerros



- Puurakenteiset osat/näkyvät puupinnat
- Betonirakenteiset osat/näkyvät betonipinnat

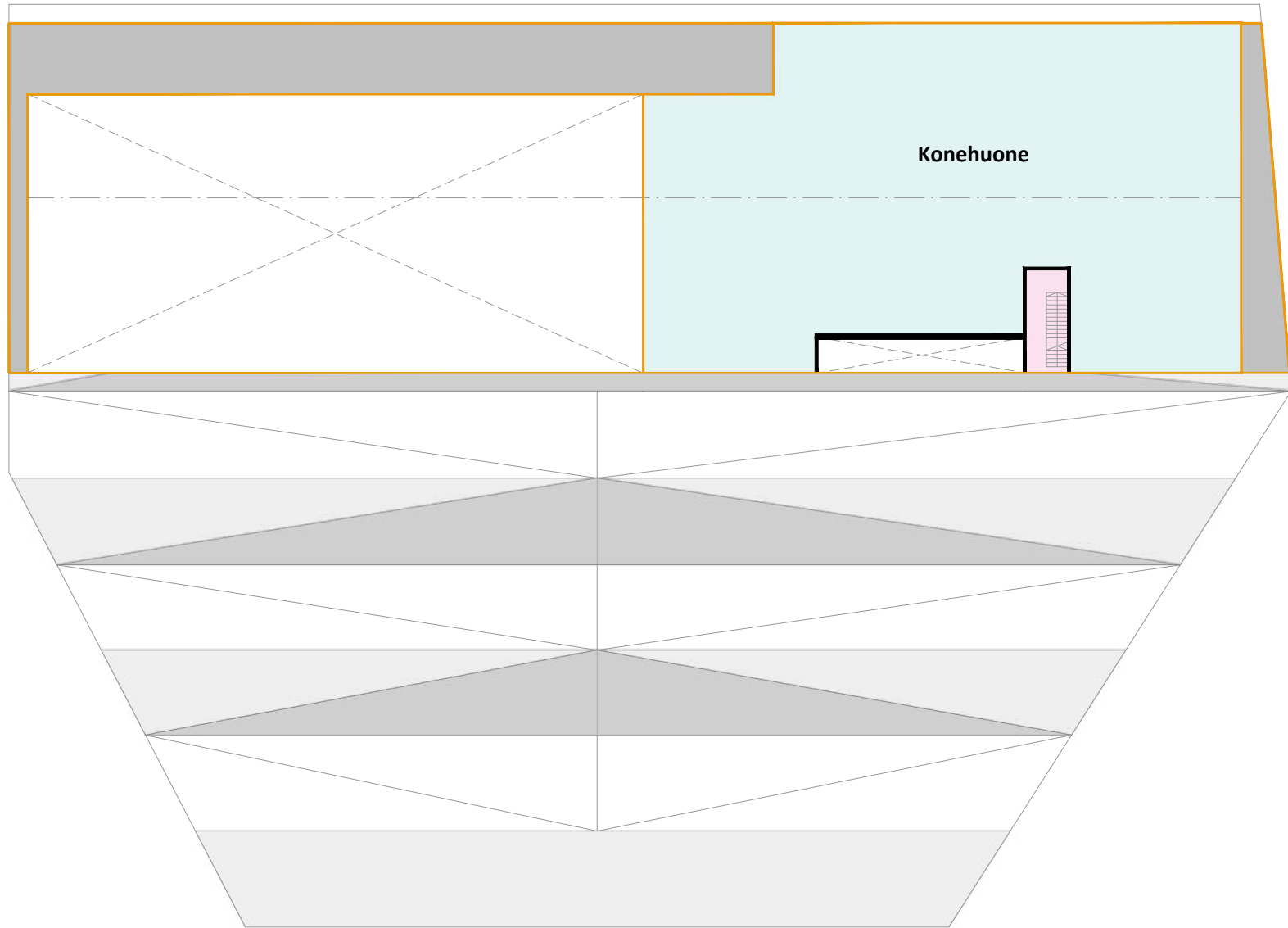


N



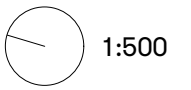
Ullakko

1



— Puurakenteiset osat/näkyvät puupinnat

— Betonirakenteiset osat/näkyvät betonipinnat

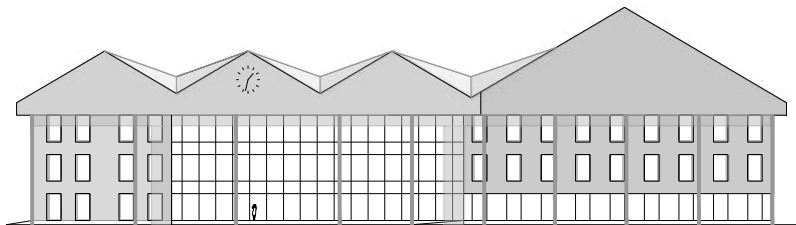


N

1



Julkisivut



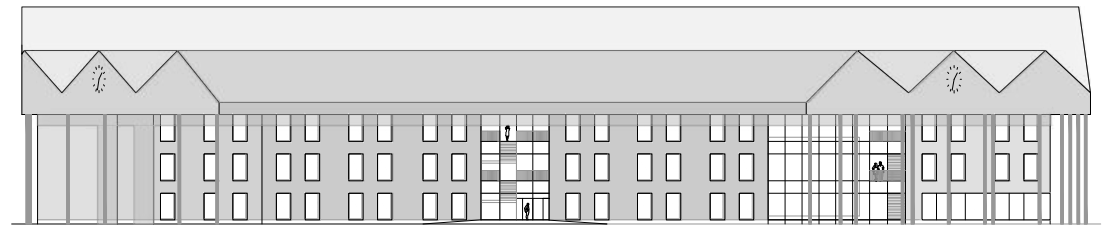
Etelään



Itään



Pohjoiseen



Länteen



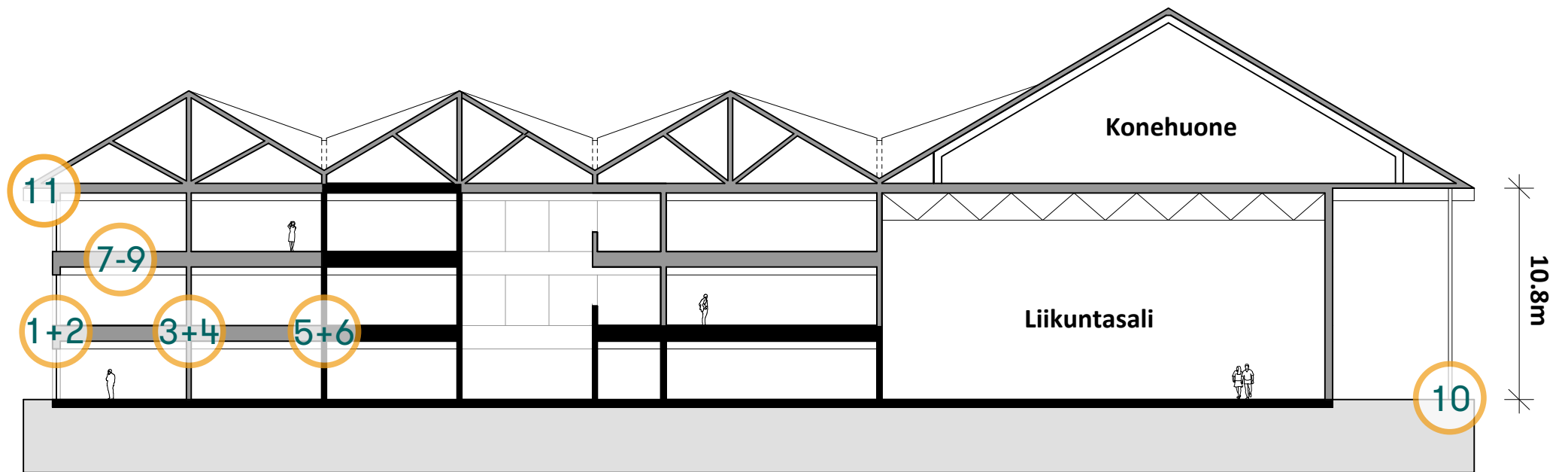
Näkymä 5-tien suuntaan



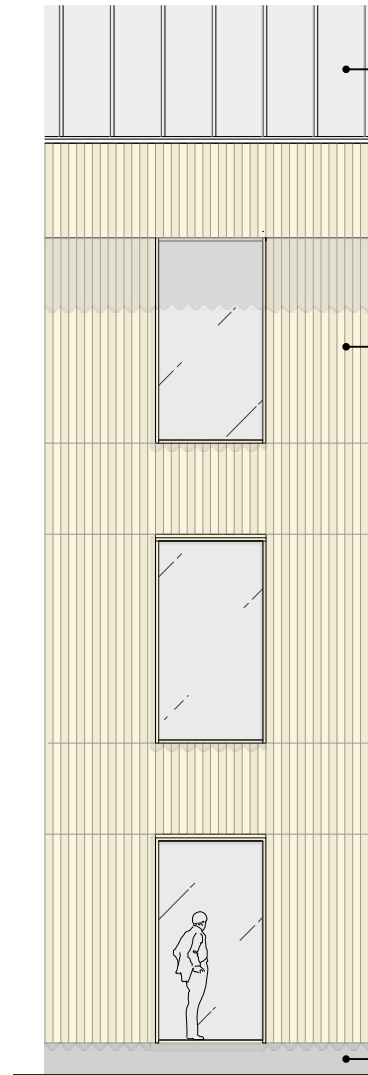
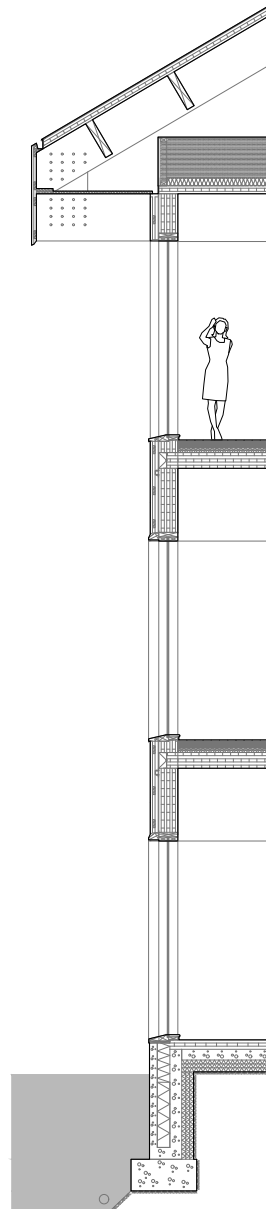
Näkymä pääaulasta puiston yli lammen suuntaan



Leikkaus - Periaatedetaljien sijainnit merkattu



Julkisivuote ja leikkaus



Vesikate

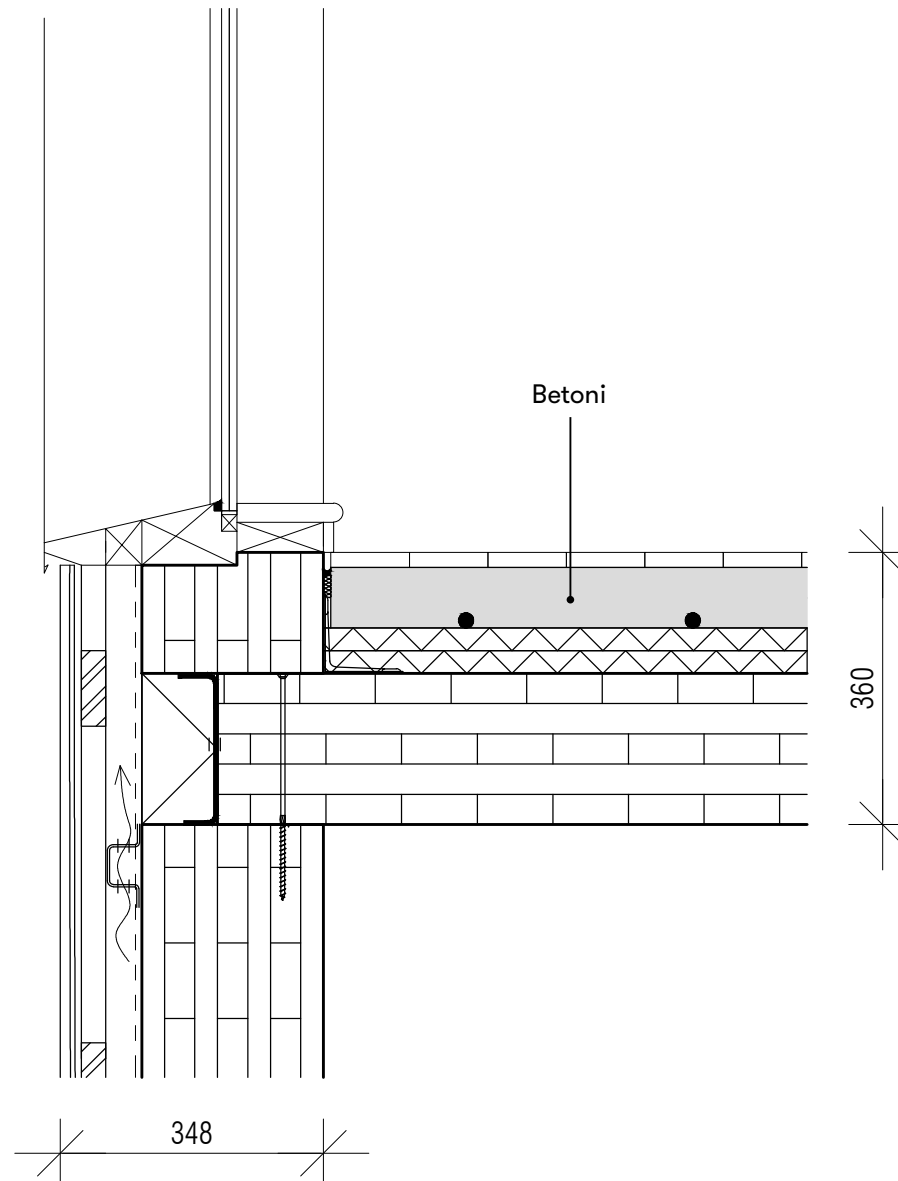
Vaihteleva puuverhous,
esim. kolmioprofiili

Puuverhous tehtävissä
esivalmistettuina
elementteinä.

Betonisokkeli



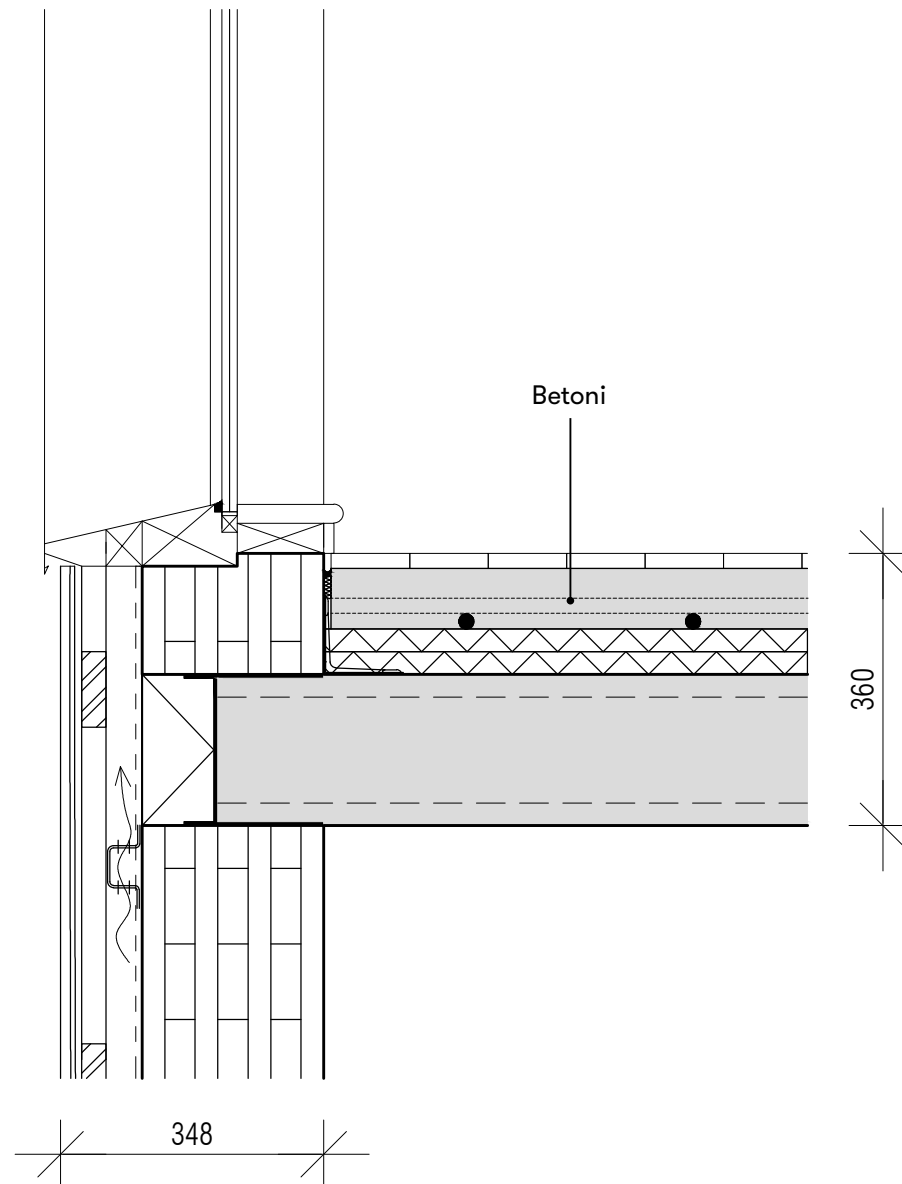
Detalji 1: CLT-ulkoseinä, CLT-välipohja



1:10



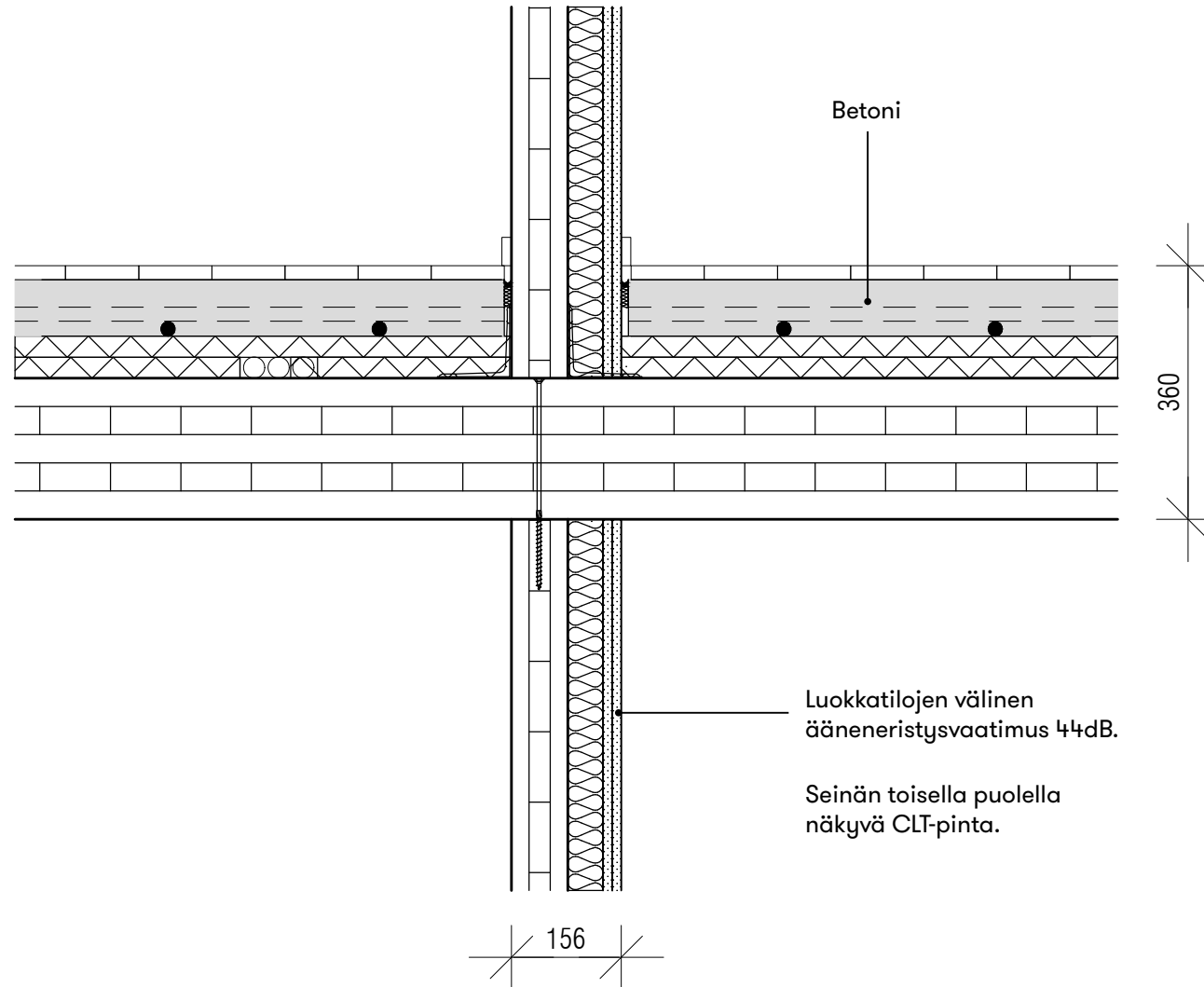
Detalji 2: CLT-ulkoseinä, ontelolaattavälipohja



1:10



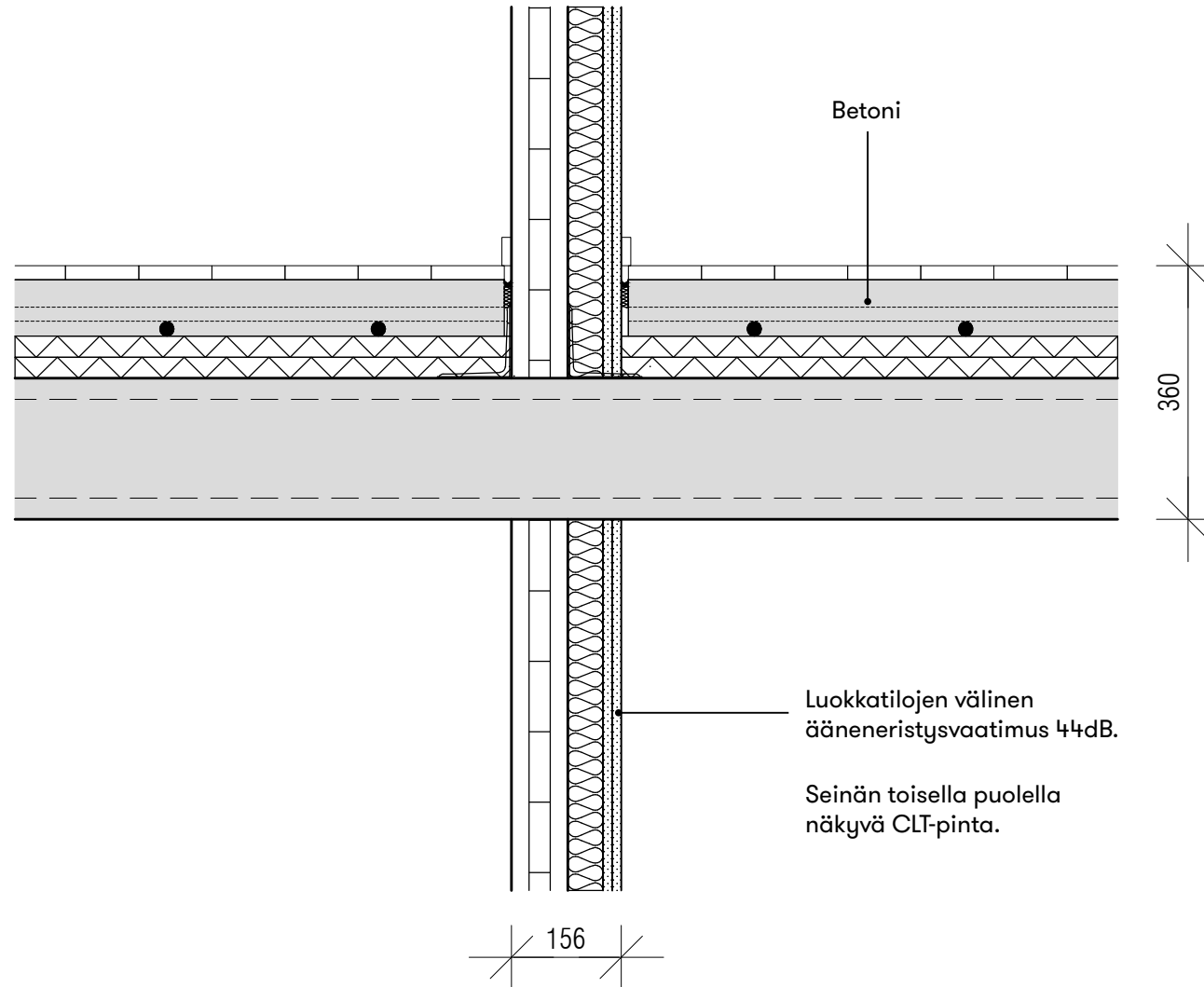
Detalji 3: CLT-väliseinä, CLT-välipohja



1:10



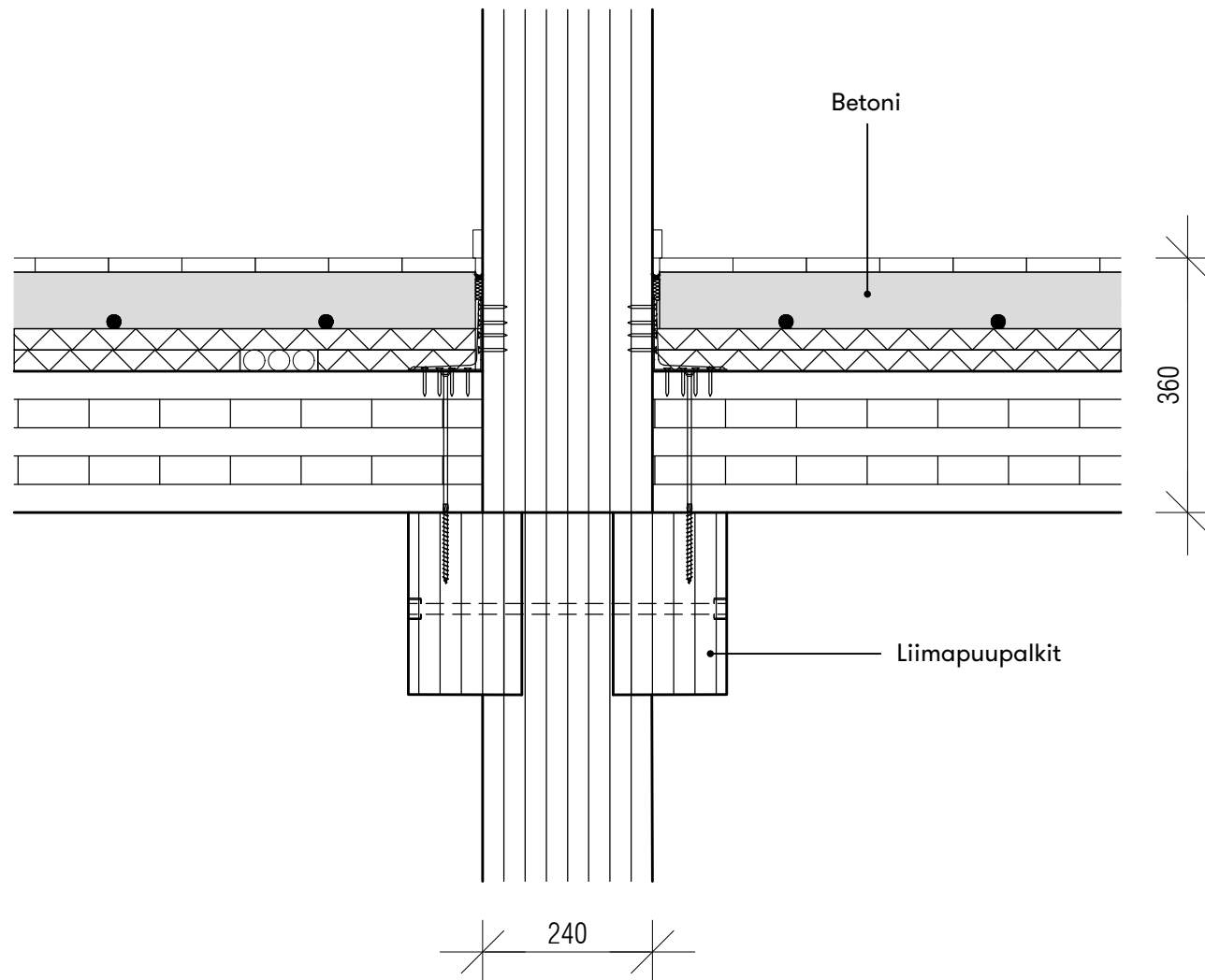
Detalji 4: CLT-väliseinä, betonivälipohja



1:10



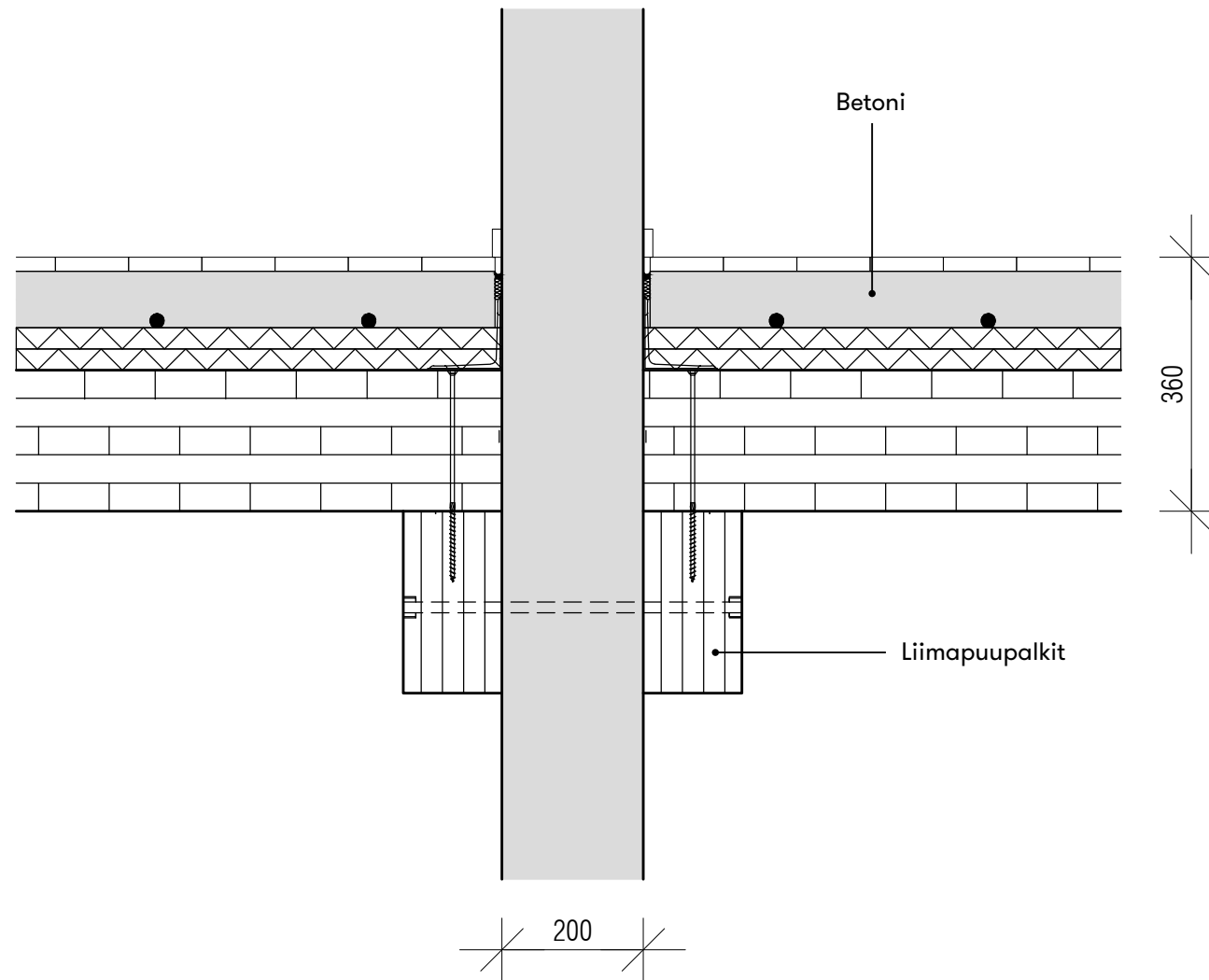
Detalji 5: CLT-välipohja, liimapuupilari



1:10



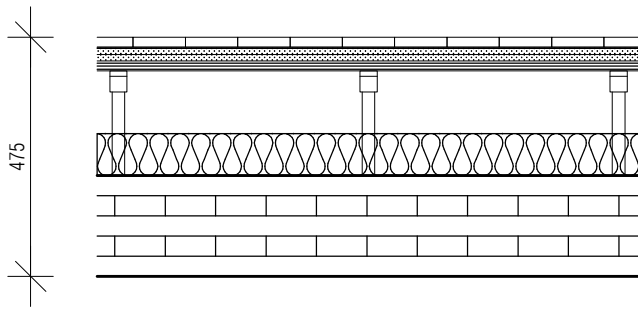
Detalji 6: Betoniväliseinä. CLT-välipohja, liimapuupalkki



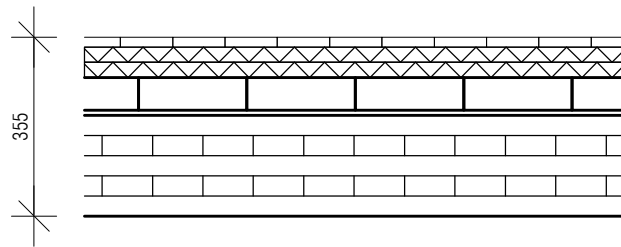
1:10



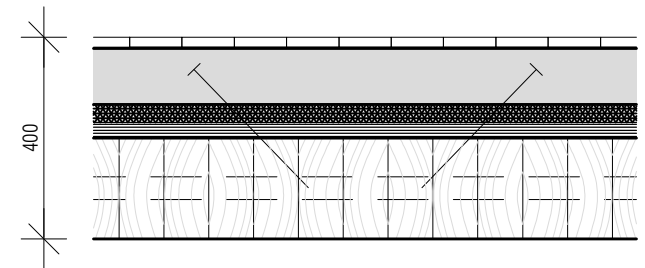
Detailit 7, 8 + 9: Välipohjavaihtoehtoja



Mekaaninen
vaimennin



Tiilitäyttö

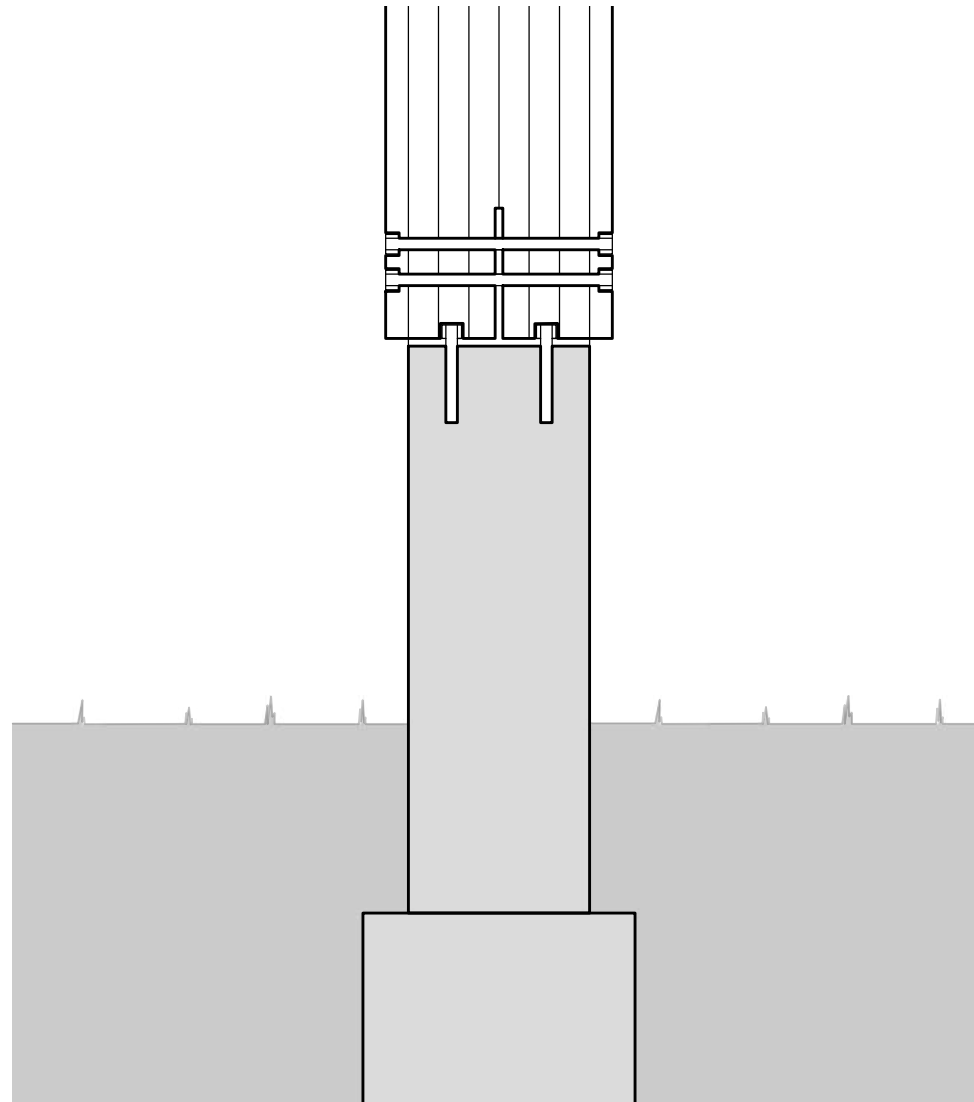


Dowel laminated
timber (DLT)

1:15



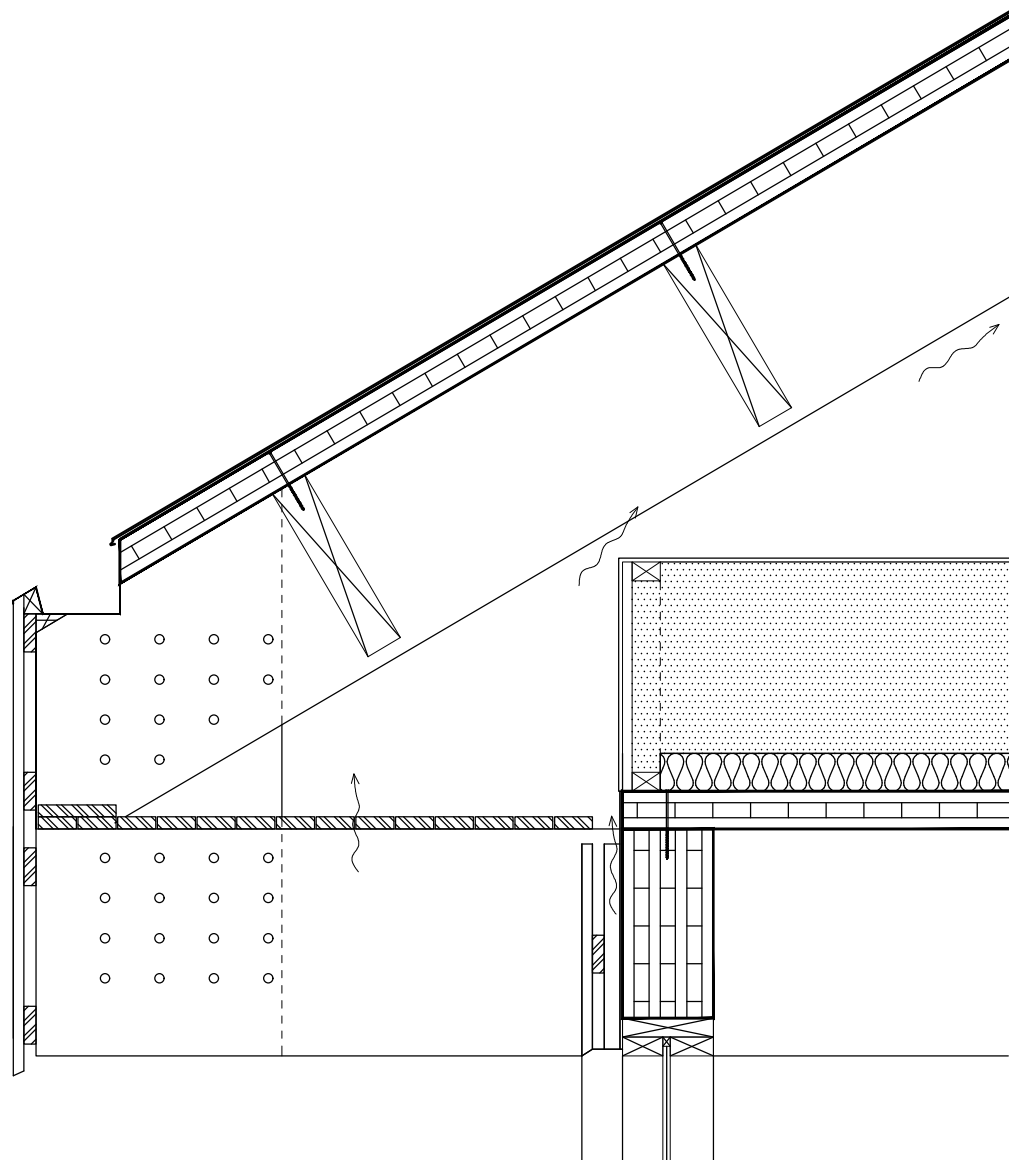
Detalji 10: Liimapuupilari, betoniperustus



1:10



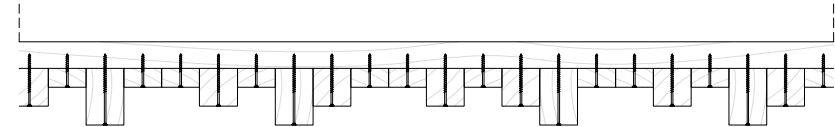
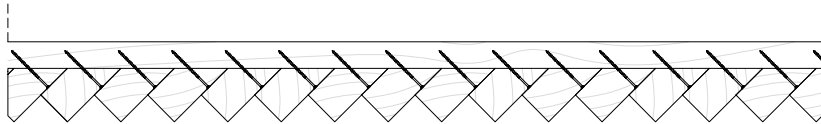
Detalji 11: Kattoristikon liittyminen CLT-runkoon



1:20



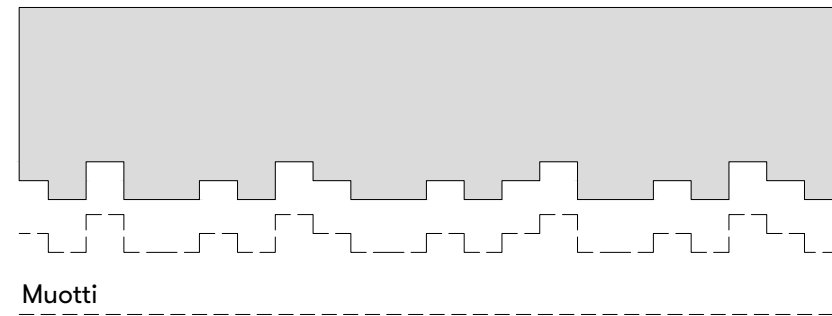
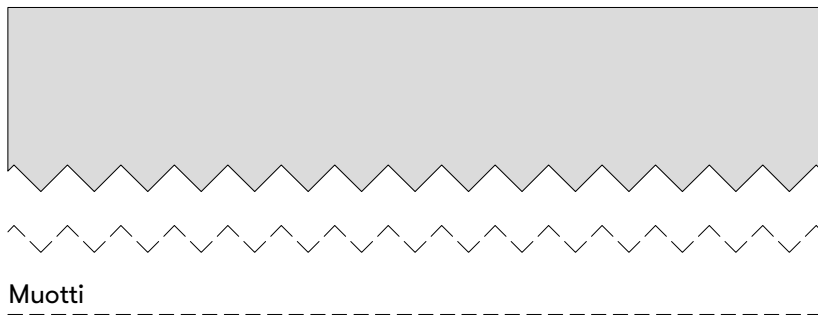
Esimerkkejä julkisivun puuverhoilun toteutuksesta



1:10



Esimerkkejä betonipintojen toteutuksesta



1:10





CLT-rakenteet



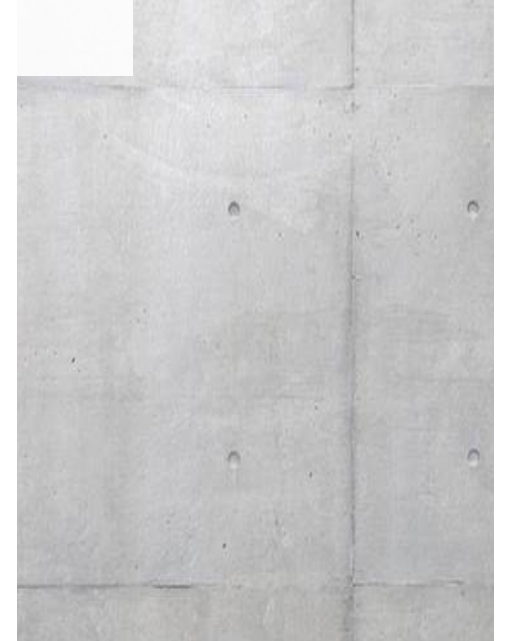
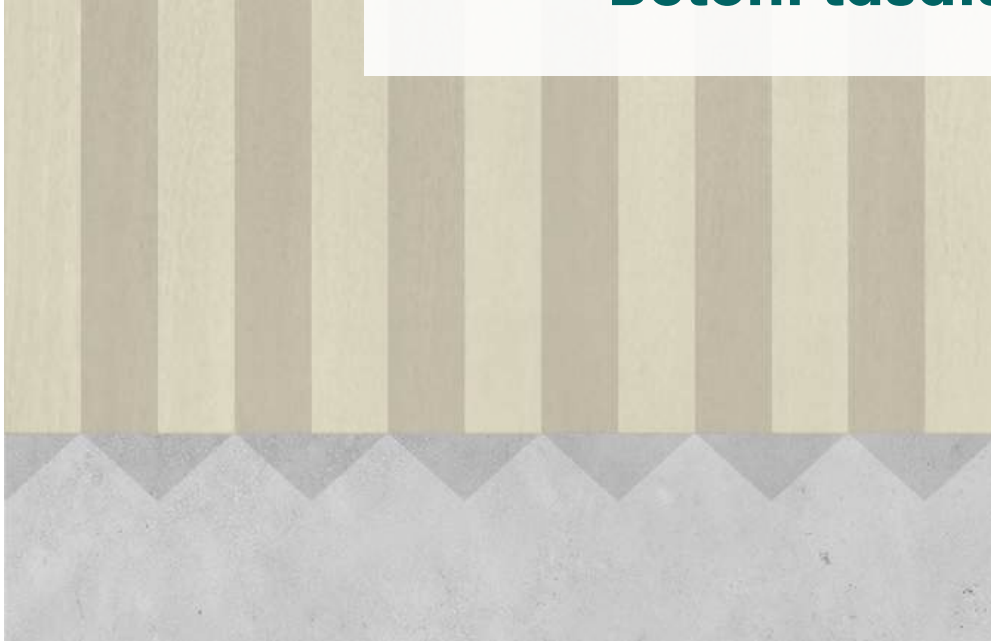


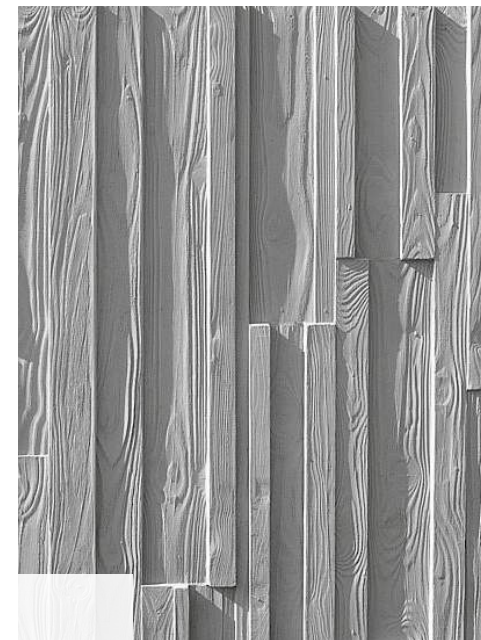
Liimapuurakenteet



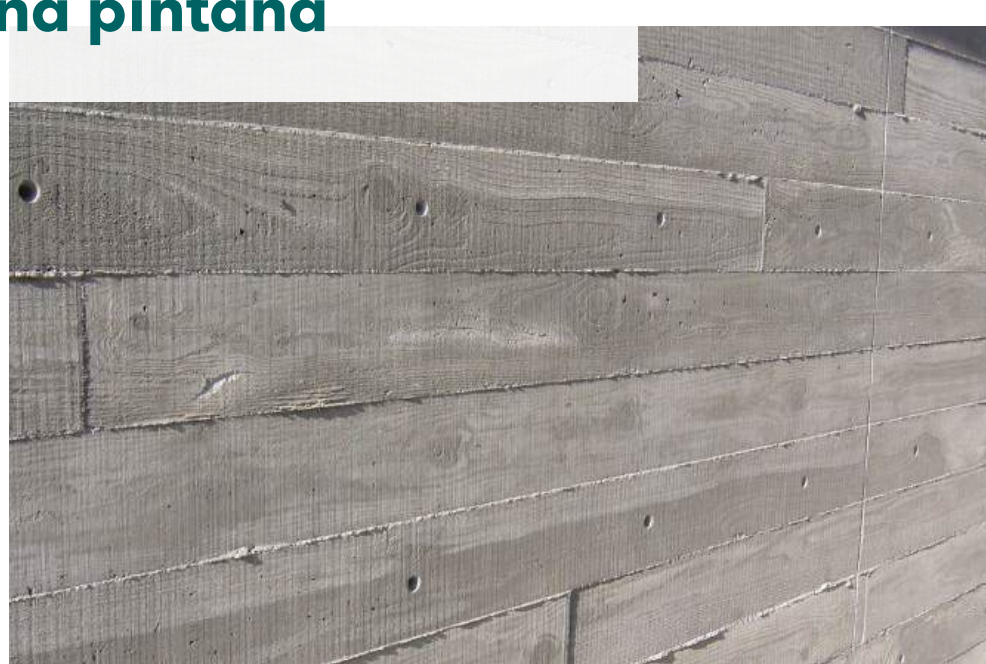
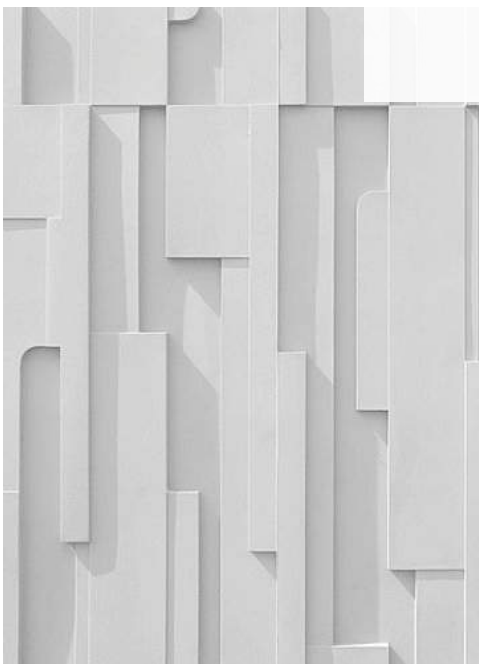


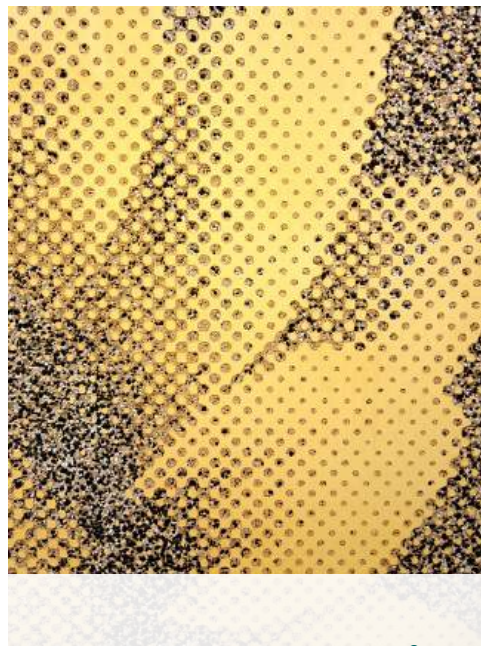
Betoni tasaisena pintana



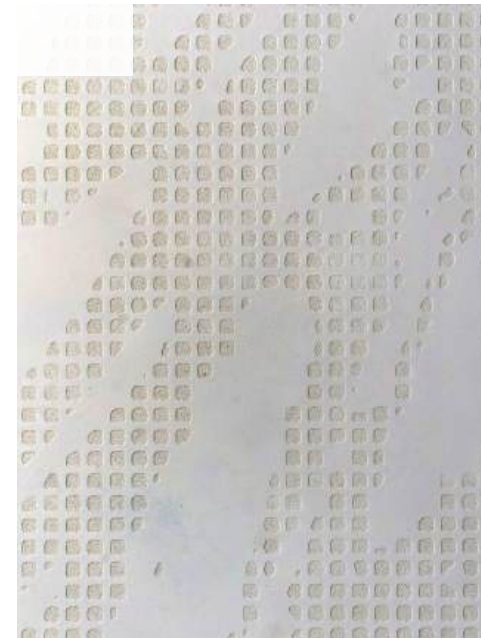


Betoni elävänä pintana





Graafinen betoni





Betoni-puu-hybridirakenne

